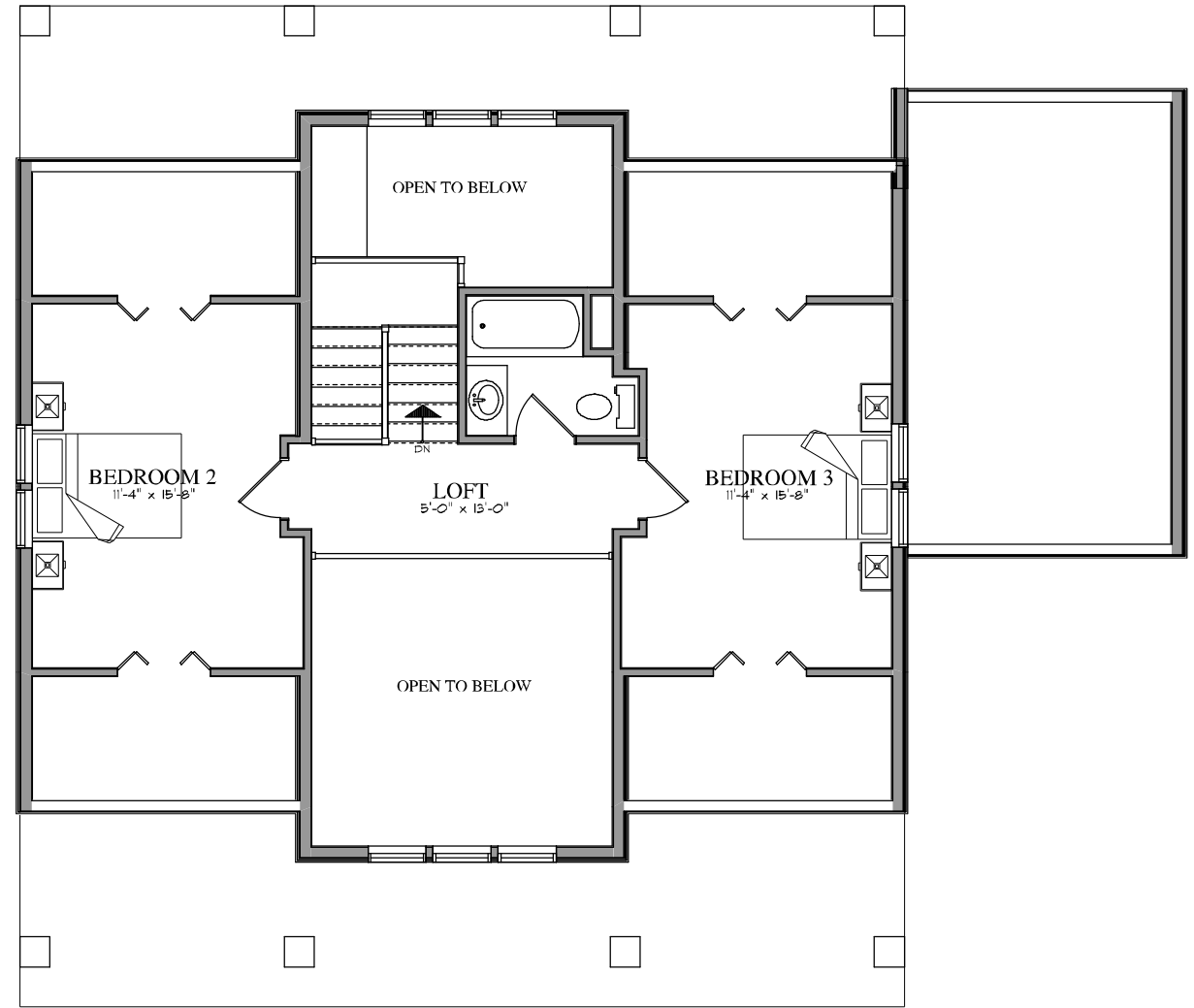


MAIN FLOOR PLAN
11/2 SF



SECOND FLOOR PLAN
514 SF

OVERVIEW
 Main Floor = 1112 sf
 Second Floor = 514 sf
 TOTAL = 1626 sf
 Building Width = 50 ft
 Building Depth = 42 ft

The Parkwood

by Trafalgar Homes